

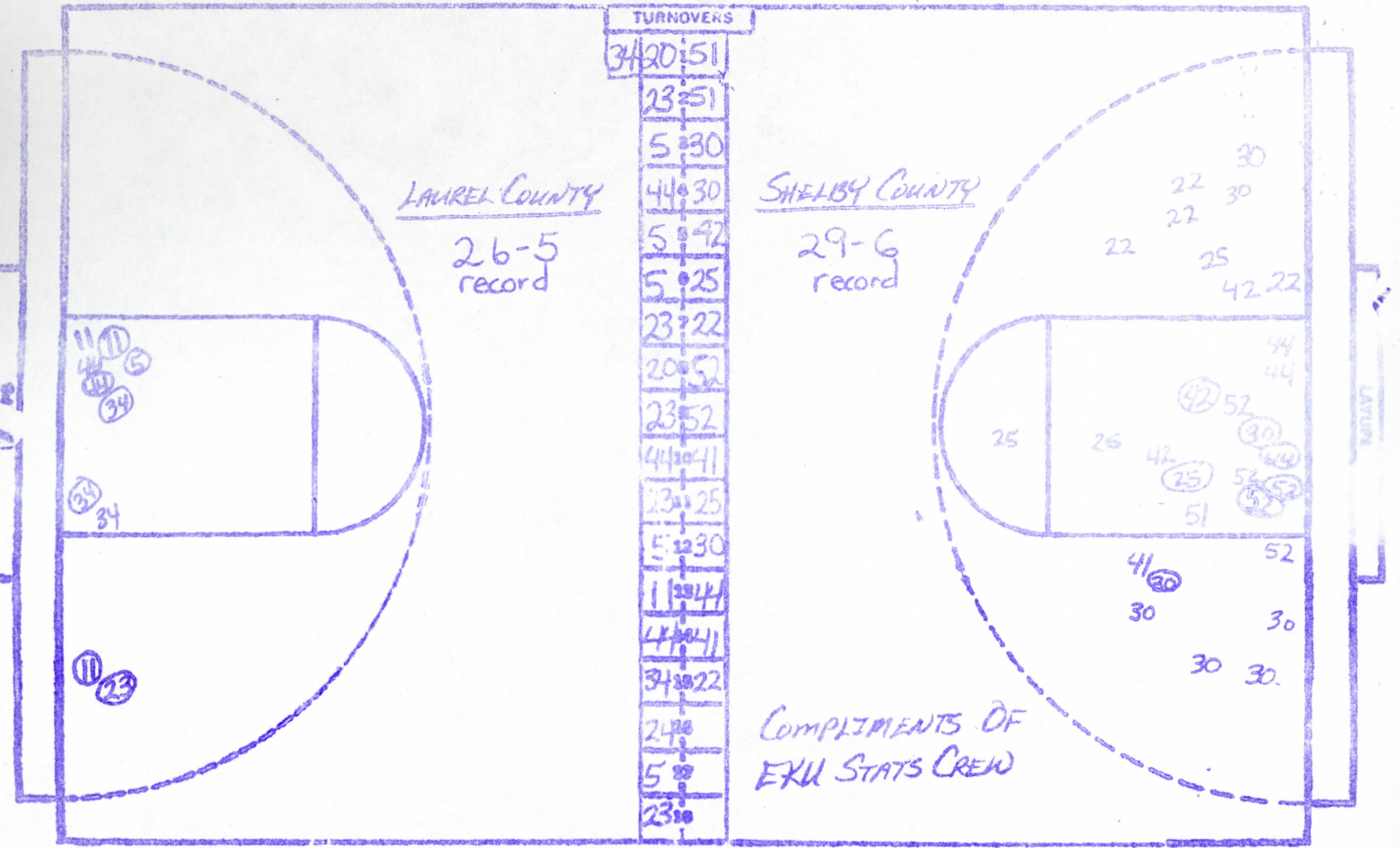
CAGE CHART

LAUREL COUNTY (12<sup>TH</sup>)

SHELBY COUNTY (8<sup>TH</sup>)

DATE

HALF FINAL



NO.	LAUREL COUNTY	FG-FOA	FT-FTA	REB	P	TP	A
23	PAT PARSONS	2-3	6-7	7	2	10	3
24	LISA PHELPS	0-0	0-0	2	2	0	0
55	MELISSA ANDREWS	0-2	0-1	1	1	0	0
44	MICHELLE HUTCHINS	4-9	1-2	3	3	9	0
11	MARSHIA PENNINGTON	3-6	0-0	4	2	6	1
5	KONNIE IRVIN	2-2	3-7	1	1	7	3
34	HOLLIE JAMES	4-6	5-9	7	3	13	2
20	JAN GARLAND	0-0	0-0	0	0	0	1
4	BOBBIE WHITE	0-0	0-0	0	0	0	0
		-	-				
		-	-				
		-	-				
		-	-				
		-	-				
		-	-	2 D.B.			
<b>TOTALS</b>		15-28	15-26	27	14	45	10

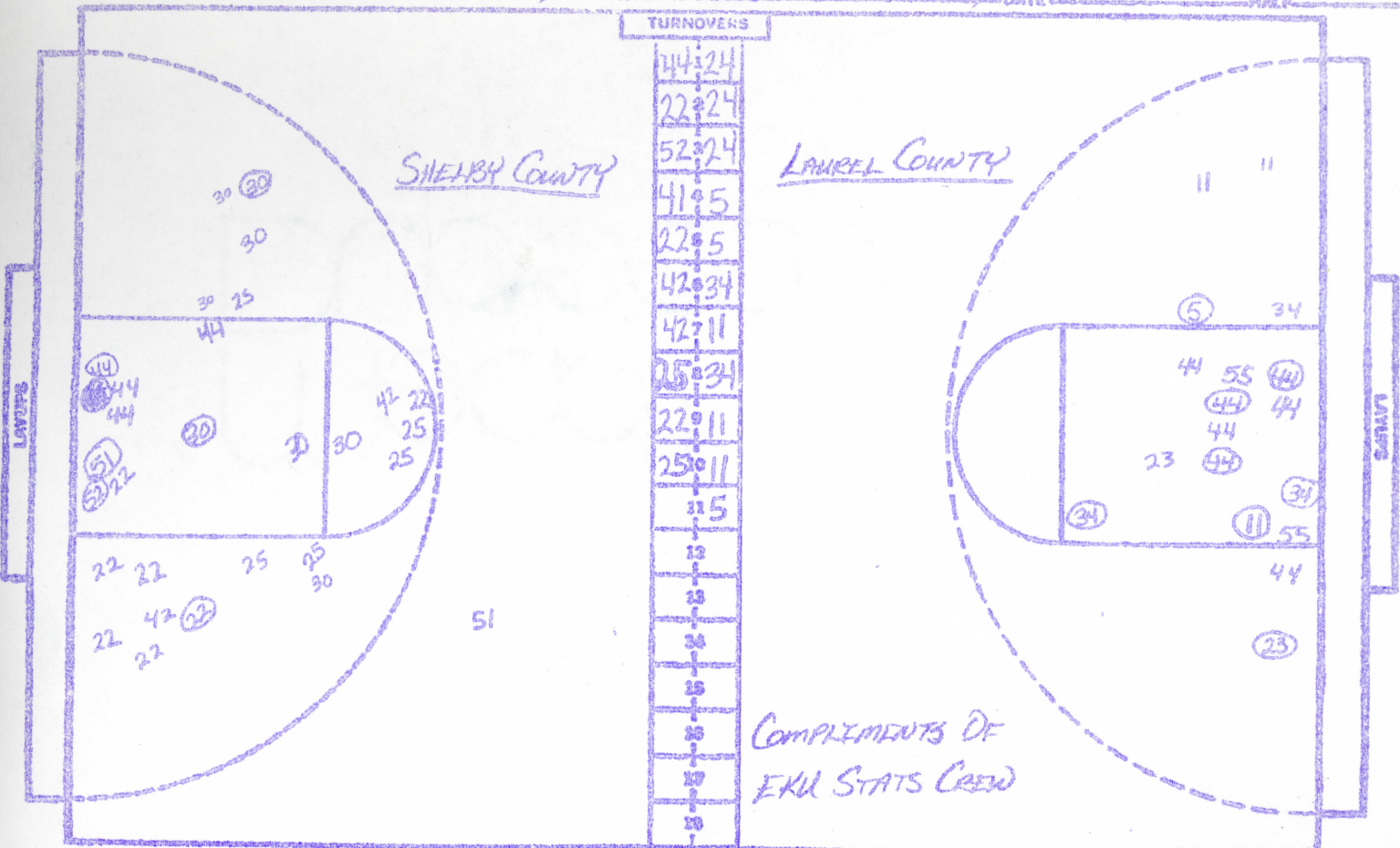
PERCENTS 53.6 57.7 6 TEAM REBOUNDS (NOT IN TOTAL)

NO.	SHELBY COUNTY	FG-FOA	FT-FTA	REB	P	TP	A
41	SUZANNE REESE	0-1	0-2	6	2	0	0
25	SHERRY MADRE	1-8	1-2	2	3	3	1
22	ANGIE SMITH	2-10	2-2	5	0	6	2
44	LUCILLE MARSHALL	2-8	2-2	9	4	6	0
30	TOY WHITE	4-16	3-4	5	5	11	1
52	KRISTIN ANDERSON	3-6	3-3	2	5	9	0
42	BEV WALKER	1-5	0-0	2	1	2	0
51	CATHERINE MARSHALL	1-3	1-2	2	1	3	1
		-	-				
		-	-				
		-	-				
		-	-				
		-	-				
		-	-				
		-	-				
		-	-	3 D.B.			
<b>TOTALS</b>		14-57	12-17	36	21	40	5

PERCENTS 24.6 70.6 3 TEAM REBOUNDS (NOT IN TOTAL)

SCORE BY ~~K~~ LAUREL COUNTY 9-9-16=45 OFFICIALS JAN BAKER & WAYNE BROWNING

SHELBY COUNTY 6-9-10-15=40



COMPLIMENTS OF  
EKU STATS CREW

NO.	SHELBY COUNTY	PG-PGA	FT-FTA	RB	P	TP	A
41	SUZANNE REESE	0-0	0-0	4	0	0	0
25	SHERRY MOORE	0-5	0-0	2	0	0	1
22	ANGIE SMITH	2-7	0-0	3	0	4	1
44	LUCILLE MARSHALL	1-4	0-0	4	1	2	0
30	TOY WHITE	2-8	0-0	3	3	4	1
52	Kristin Anderson	1-1	1-1	2	0	3	0
42	Bev Walker	0-2	0-0	0	0	0	0
51	Gwerella Marshall	1-2	0-0	0	1	2	0
		-	-				
		-	-				
		-	-				
		-	-				
		-	-				
		-	-				
		-	-				
		-	-				
<b>TOTALS</b>		<b>17-29</b>	<b>1-1</b>	<b>18</b>	<b>5</b>	<b>15</b>	<b>3</b>
<b>PERCENTS</b>		<b>24.1</b>	<b>100.0</b>	<b>1</b>	<b>TEAM REBOUNDS (NOT IN TOTAL)</b>		

NO.	LAUREL COUNTY	PG-PGA	FT-FTA	RB	P	TP	A
23	PAT PARSLEY	1-2	0-0	2	1	2	2
24	LISA PHELPS	0-0	0-0	1	1	0	0
55	MELISSA ANDREWS	0-2	0-0	1	0	0	0
44	MICHELLE HUTCHINS	3-7	1-2	1	1	7	0
11	MARSHA PENNINGTON	1-3	0-0	2	0	2	0
5	Konnie Irvin	1-1	0-0	0	0	2	3
34	Hollie James	2-3	1-2	3	1	5	2
20	Jan Garland	0-0	0-0	0	0	0	0
		-	-				
		-	-				
		-	-				
		-	-				
		-	-				
		-	-				
		-	-				
		-	-				
<b>TOTALS</b>		<b>8-18</b>	<b>2-4</b>	<b>7</b>	<b>4</b>	<b>18</b>	<b>7</b>
<b>PERCENTS</b>		<b>44.4</b>	<b>50.0</b>	<b>4</b>	<b>TEAM REBOUNDS (NOT IN TOTAL)</b>		

SCORE BY OHS  
 OFFICIALS: JAN BAKER & WAYNE BROWNING  
 ATTENDANCE: SESSION TWO est 2,500

LAUREL COUNTY  
 9-9=18